



CONE 7
CERAMIC WORKSHOP

Residency presentation 2024



B-Open, September 2021.

About

Cone 7 is an open cultural platform where artists, designers and other interested parties may experiment with clay and specific tools that are involved in a ceramic based practice. The workshop based in Laksevåg facilitates differing research methods, courses and other arrangements. As an open ceramic workshop where classes are held, artists can also rent a space or a technician to complete their specific projects.

Cone 7 is run by professional artists, Eléonore Griveau assisted by Joe Welch. Open to artists, designers, and anyone willing to experiment with clay, our mission is to develop a long term ceramic community and to promote its application in art, design and craft. Graduated from the Art Academy of Bergen with a ceramic based practice, we are two artists who have been involving ourselves in the art scene of Bergen ever since.

From pottery throwing, hand building, 3D clay printing classes, to special firings and glazing courses, all participants are guided by specialists to realize their plans. Central to our workflow, the participants are in full control with their ideas and process. From making molds, use of materials, to firing and installation, we also provide technical advice. We help in all areas of the ceramic and sculpture process to artists and ceramists. We are open in hosting open house days for school classes to come and try out ceramics.

As an open workshop, artists can rent a space or even hire a technician for their specific projects. Kilns are accessible for firings but not everyone can transport very fragile pieces, therefore it remains important in our eyes that a space is accessible for that purpose. In the near future, we would also like to implement groups shows, events, special workshops, an online shop and pop up sales.

Our residency program: General

With an aspiration for a freedom to research in all facets of ceramic, we want to make Cone 7 a community which can provide a good and evolving workplace for people willing to work with three-dimensional objects, preferably in clay and using ceramic processes. Based in Vestland, our aim is not to restrict the access of our facilities to our area only but to remain an open and inclusive community with professional discussions and activities that can make the artists' practice visible to the public. We are implementing a (inter)national program which takes form from open call, residencies and specific exchange agreements between ceramic communities.

Created by Eléonore Griveau, the Cone 7 Residency program gives the artists an opportunity to work in a professional environment, exchange knowledge and experience within the ceramic field, and to start inspirational collaborations with other ceramic artists in an international environment with professional support and dialogue from the staff at the ceramic workshop. The program gives the young aspiring ceramists an irreplaceable international network while they develop their personal project leading to an restitution exhibition. The combination of great facilities, the presence of consultants with internationally leading technical knowledge and the openness to freely share recipes, processes and innovations, makes our workshop special. Our desire is to further develop the material ceramic and to promote its application in art, design and architecture.

Since 2021, we have been engaged with **SWAP**, an international residency and exhibition project that aims to activate and promote cultural exchange and creative cooperation between Italy, France and Norway. The project takes place between Calderara di Reno (Bologna), home of the cultural center Casa della Cultura "Italo Calvino" as well as the independent exhibition space *Adiacenze* and Bergen. The curatorship of the project is of Portioli, Amerigo Mariotti, Giorgia Tronconi of *Adiacenze* and in Norway, Eléonore Griveau. The curatorial collective thus selects an Italian, a Norwegian and French artist, protagonists of the exchange.



Gwenael Lebéé, our first artist in residence at Cone 7 in July 2021.

Work in progress of Tone Andersen, renting a space in Cone 7 for 2 months.





The project started in 2022 where the selected artist is to be hosted for a 1 month residency in Bergen, working on the production of an original solo exhibition, to be realized in a local contemporary art cultural center.

The first Italian artists to take part in this exchange was the duo Antonello Ghezzi, whose artistic practice revolves around relationships and situations which are appropriated through various media. Throughout the residency period in Bergen, they had the chance to produce their artwork in the stimulating environment of Cone 7 ceramic workshop, thus creating a fertile ground for exchange between Antonello Ghezzi and Bergen-based artists. They showed the result of residency at Habitat artspace. The final goal of the project is to offer artists the opportunity to research and confront themselves through their own artistic practice with a different cultural context. , where the constant support of local curators will be fundamental.

Another branch is the partnership between *SWAP*, *Cone 7* and **Mode d'emploi**. The association Mode d'Emploi has hosted since 2007 artists in residency of research and creation in the grant pavilions of the city of Tours (France). At the same time, the association works to disseminate and promote contemporary visual art in the Loire region.

Cone 7 is a key player in the conceptualization and execution of a dynamic crossed residence initiative. The association will commit on several crucial responsibilities to ensure the success and enrichment of this program. First and foremost, Cone 7 commits to hosting a distinguished international artist in residence. This artist will be an integral part of an international artistic and cultural exchange that is scheduled to take place in 2024. By facilitating the exchange of ideas, experiences, and artistic expressions across borders, Cone 7 aims to foster a vibrant atmosphere of cultural diversity and mutual learning.

Antonello Ghezzi and their exhibition at Habitat, Bergen.



*Frederico Branchetti, Italian artist
on residency at Cone 7 in 2023.*

We recognize the paramount importance of providing the artist with the means necessary to concretize their artistic project. This includes allocating resources and support tailored to the specific needs and vision of the artist. The association takes pride in nurturing creative freedom and empowering artists to fully explore and manifest their artistic endeavors during their residency.

In addition to the artist's individual pursuits, we will organize meaningful interactions with the public and professionals within the local territory. By doing so, the association aims to bridge the gap between the artist and the community, fostering a deeper understanding and appreciation of the artistic process.

One public presentation, a solo exhibition, and interactive sessions will be thoughtfully arranged to engage the public and enable fruitful discussions between the artist and local audiences. This cultural exchange is expected to create lasting connections, leaving a positive impact on both the artist's creative journey and the local artistic ecosystem.



*Anne-Lise Voisin, french artist on residency at Cone 7 in
November 2022. Solo show at BAG*

International Residency budget

Cone 7- Ceramic workshop AS		
Residency budget per artist for one month (in NOK)		
Clay for construction/making (all type of clay and slip casting clay)	Average price per bag/250 (supplier we.no)	2500
Firing low in 300L Nabertherm Kiln	price per firing (service + electricity) 300kr x2	600
Firing high 300L Nabertherm Kiln	price per firing (service + electricity) 450kr x2	900
Rental space for the artist for one month	Including, space, collective electricity, internet	4000
Glaze conception	made in our workshop with raw materials supplied by we.no	2000
Technical assistance and teaching at Cone 7	provided by Eléonore Griveau for a month of guidance	8000
Artist Study trip, institutions, galleries visits	Transport to site/ landscapes etc	2000
Others use of tools and materials	<i>provided by Cone 7</i>	Included
Exhibition production	<i>provided by Cone 7</i>	Included
Total gross costs per residency		20000

Notes:

Cone 7 applies to Norwegian institution fundings to try to remunerate artists.

The institutions hosting the artist talk commits to remunerate the artist.

In addition Cone 7 commits to find the most comfortable and cheapest accomodation for the artist

PROGRAM 2022

April 2022: Antonello Ghezzi, Cone 7, Bergen, Norway.
Solo show in Habitat Art space.

October 2022: Eléonore Griveau, Adiacenze, Bologna, Italy.
Solo show in Adiacenze art center.

November 2022: Anne-Lise Voisin, Cone 7, Bergen, Norway.
Solo show in Bergen Ateliergruppe collective.

PROGRAM 2023

April 2023: Giulia Querin, Cone 7, Bergen, Norway.
Solo show in Bergen Ateliergruppe collective.

October 2023: Joe Welch, Adiacenze, Bologna, Italy.
Solo show in Adiacenze art center.

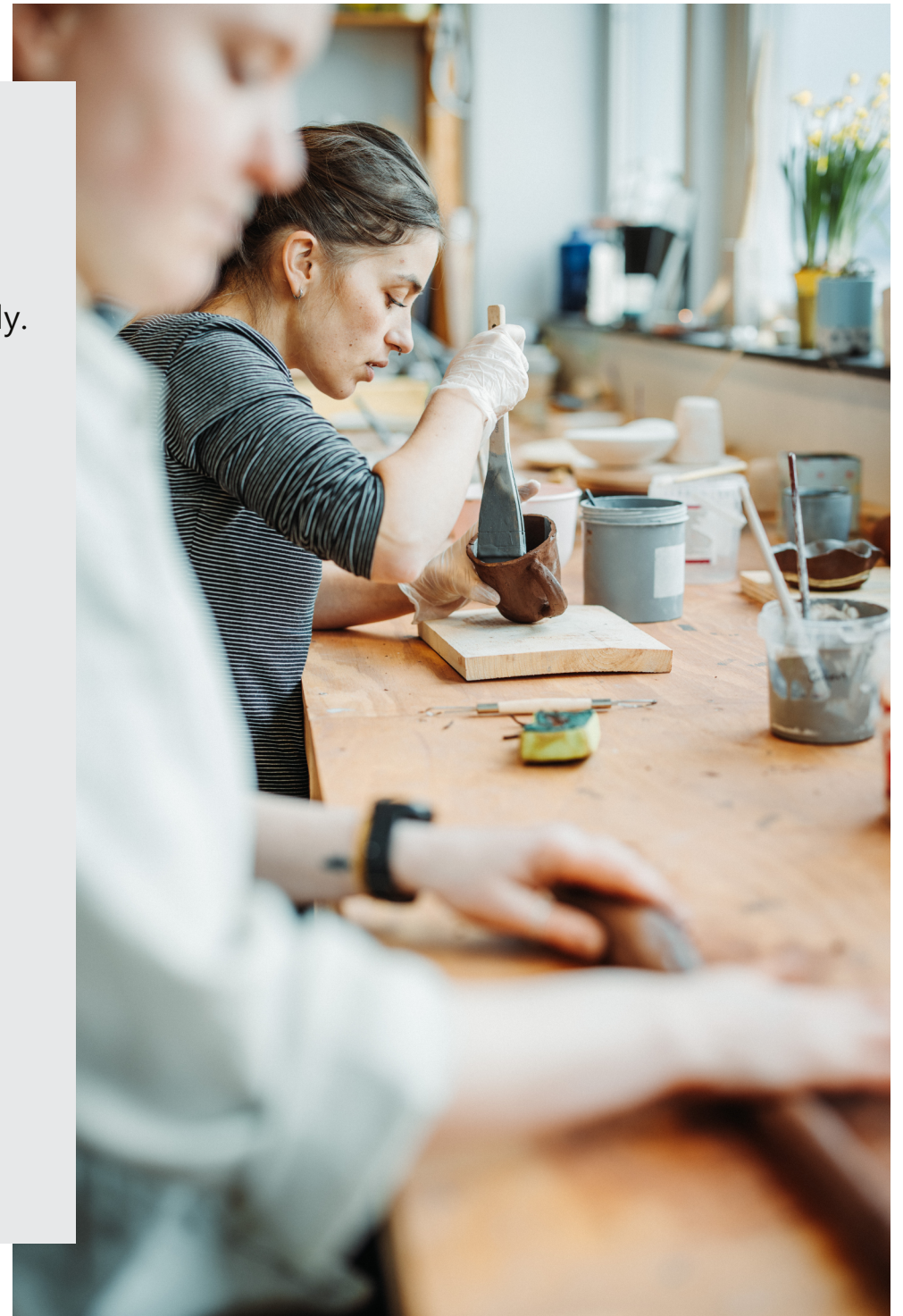
November 2023: Federico Branchetti, Cone 7, Bergen, Norway.
Solo show in Habitat Art space.

PROGRAM 2024

April 2024: Marine Duforet, Cone 7, Bergen, Norway.
Solo show in Habitat Art space.

Open call in process

Autumn 2024: TBA



Our research on glaze

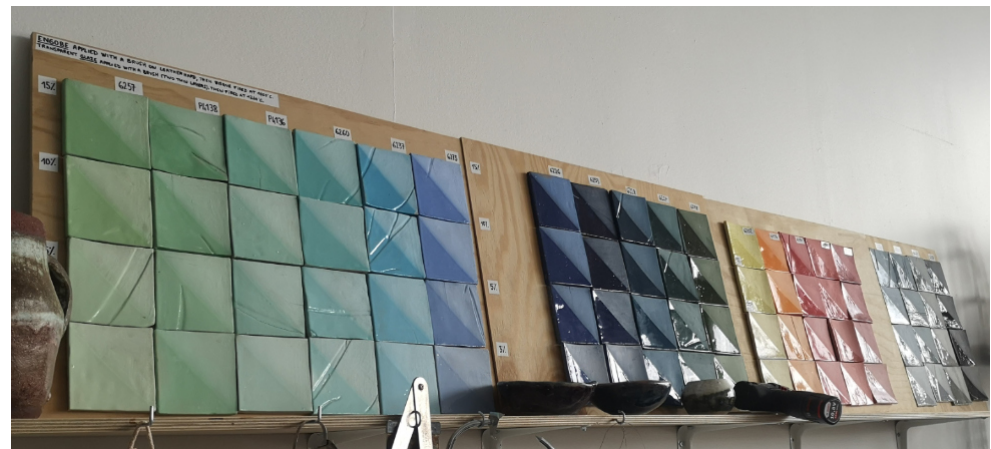
One of the biggest processes that is often reduced and limited to ceramists is making glazes from scratch. We often limit ourselves to expensive “ready made glaze” with little possibilities as a proper glaze laboratory requires proper ventilation. The harmful minerals are contained in sealed boxes and masks and gloves are used even when a strong ventilation is turned on. As glazing researchers, one of the assets that we implemented in our workshop is to propose the possibility to teach how to create a glaze and offer the access to use the laboratory and its glaze archive.

Our glaze library is a project built by Joe Welch, which consists of a personal archive of research about the possibilities of glazes. This growing project aims to expand itself throughout Cone 7 by working closely with guest researchers and curious learners eager to contribute to a library in constant development.

Research on glaze in ceramics has long been an essential aspect of the field, continually pushing the boundaries of artistic expression and technical innovation. CONE 7 is at the forefront of this research, dedicated to exploring glaze formulation and fostering innovation. Collaborating with scientists and ceramic artists, CONE 7 develops new glaze recipes, experimenting with different combinations of minerals, oxides, and fluxes. Our research extends beyond formulation, delving into the chemical and physical transformations that occur during the firing process. By studying glaze behavior under various firing conditions, they gain insights into the crystalline structure, phase changes, and surface interactions that contribute to the final appearance and durability of the glaze. This knowledge helps improve glaze performance, reduce defects, and ensure consistent results.



Glaze facilities



Research on Stains through clay and glazes.

CONE 7 is passionate about sustainability. Their research explores environmentally friendly alternatives, such as incorporating low-toxicity materials, natural pigments, and recycled glass. By prioritizing sustainable practices, we reduce the environmental impact of ceramic production while maintaining the aesthetic and functional qualities of glazes. Our dedication to glaze research not only benefits ceramic artists and manufacturers but also contributes to the broader understanding of glaze technology. Their work inspires new artistic expressions, improves ceramic production techniques, and fosters sustainable practices.



Our FAB LAB

Our Fab Lab, short for Fabrication Laboratory, is a small-scale workshop equipped with digital fabrication tools and technologies. These labs offer individuals and communities access to 3D clay printer and other computer-controlled machines that enable the rapid prototyping and production of physical objects. Fab Labs are designed to foster creativity, collaboration, and innovation, empowering users to turn their ideas into tangible creations. They are often open to the public and provide a supportive environment for individuals of all skill levels to explore and experiment with various fabrication processes.

The emergence of 3D clay printing has revolutionized the field of ceramics, bringing about profound changes in both artistic expression and sustainable practices. At the forefront of exploring this groundbreaking technology is Cone 7, an organization that not only owns a 3D printer but is also actively engaged in extensive research, workshops, and educational lectures. With the implementation of 3D clay printing, we are discovering new and exciting possibilities previously unattainable through traditional ceramic techniques. By experimenting with different printing parameters and clay formulations, they push the boundaries of what can be achieved in ceramic design, enabling artists and designers to create intricate and innovative objects that were once inconceivable.

One of the most significant advantages of 3D clay printing lies in its ability to reduce material waste and optimize resource utilization. Unlike conventional methods that often result in substantial material loss during shaping and firing, 3D clay printing allows precise control of the amount of clay used, minimizing waste and aligning with our commitment to environmentally-friendly practices. Recognizing the transformative potential of 3D clay printing, it actively shares its expertise and knowledge with the ceramic community. Through workshops and engaging lectures, they inspire and educate artists, designers, and enthusiasts about the numerous possibilities and techniques of 3D clay printing. This collaborative environment fosters the exchange of ideas, pushing the field of ceramic art into exciting and uncharted territories.



PUBLIC CLASSES

Throwing courses/ all levels

2 sessions minimum

Every:

Tuesdays 18.00-21.00

Fridays 10.00-13.00 and 15.00-18.00

Saturdays 10.00-13.00 and 17.00-20.00

Discovery one evening course/ all levels

Every Thursdays 18.00-21.00

Weekend courses/ all levels - adults and kids

Check the next sessions online !



Johan Berentsens vei 65, 5160 Bergen

Book online on Cone7.com
or send a email at
cone7.contact@gmail.com

